



EBARA

479705371 02/06

New



EBARA

www.ebara-europe.com

Let Our Excellence
Be Yours

EBARA PUMPS EUROPE S.p.A.
Via Pacinotti, 32
36040 BRENDOLA (VICENZA), Italy
Phone +39 0444 706811
Fax +39 0444 706950
www.ebara-europe.com
marketing@ebara-europe.com

EBARA PUMPS UK LIMITED
Unit 7- Zodiac Business Park
High Road - Cowley Uxbridge
Middlesex UB8 2 GU,
United Kingdom
Phone: +44 1895 439027
Fax: +44 1895 439028

EBARA ESPAÑA BOMBAS S.A.
C/Cormoranes 6Y8
Polígono La Estación
28320 Pinto (Madrid), Spain
Phone: +34 916.923.630
Fax: +34 916.910.818

EBARA FRANCE
Maille Nord 2
8, Avenue Montaigne
93160 Noisy Le Grand, France
Phone: +33 (0) 155851616
Fax: +33 (0) 155851639

EBARA PUMPEN
Philipp-Reis - Str. 15
63128 DIETZENBACH, Germany
Phone: +49 6074/82790
Fax: +49 6074/827942

EBARA pompy polska Sp z o.o.
ul. Minska 63
03-828 Warszawa, Poland
Phone: +48 22 3308118
Fax: +48 22 3308119

Let Our Excellence
Be Yours

Pompe sommerse 6" - 8"
serie BHE

Submersible pumps 6" - 8"
series BHE



EBARA

Let Our Excellence Be Yours



6 BHE

6 BHE

Pompe Sommerse Serie BHE in Acciaio Inossidabile Per pozzi profondi 6" e superiori

Tre modelli a flusso radiale per alte prevalenze e medie portate, due modelli a flusso semiassiale per medie prevalenze ed alte portate.

APPLICAZIONI

- Approvvigionamento idrico da pozzi profondi
- Distribuzione idrica e pressurizzazione
- Impianti di irrigazione, trattamento acque, filtraggio e osmosi inversa
- Sistemi industriali di raffreddamento
- Fontane
- Impianti antincendio

CARATTERISTICHE

- Struttura completamente in acciaio inossidabile per assicurare resistenza alla corrosione e durata nel tempo oltre che un perfetto allineamento di tutti i componenti
- Giranti e diffusori realizzati in acciaio inossidabile per garantire ottimi rendimenti ed elevate prestazioni
- Anello di rasamento in Teflon, supporto di guida albero in ceramica e cuscinetto autolubrificato in gomma nitrilica assicurano la resistenza all'usura per prestazioni costanti e affidabilità del prodotto
- Valvola di ritegno integrata nella testata di acciaio microfusa, capace di scaricare eventuali colpi d'ariete sulla testata stessa salvaguardando il pacco idraulico
- Pompa compatta, e adatta anche al funzionamento in posizione orizzontale
- Il progetto idraulico esalta il rendimento riducendo così i costi energetici per una massima economicità di esercizio

DATI CARATTERISTICI

- Portate fino a 70 m³/h
- Prevalenze fino a 500 m
- Massima quantità di sabbia tollerata nell'acqua: 50 gr/m³
- Campo di temperatura del liquido pompato: da 0°C a +50°C
- Rotazione antioraria rispetto al corpo di mandata
- Funzionamento continuo in posizione verticale oppure orizzontale
- Giunto e flangia di accoppiamento motore a norme NEMA

SOLUZIONI DISPONIBILI SU RICHIESTA

- Versione L in acciaio inossidabile AISI 316 (DIN/EN 1.4401)
- Doppio copricavo per motori con avviamento a stella/triangolo
- Corpo di mandata da 2" e 3" Rp per modelli BHE 14 e BHE 19
- Supporto motore per accoppiamento a motori da 4 pollici
- Versione per alte temperature (fino a 90°C)

BHE Stainless Steel Submersible Turbine Pumps for 6" and larger deep wells

The improved mechanical design combined with the use of an advanced stainless steel manufacturing technology results in a state-of-the-art 6" submersible pumps series.

APPLICATIONS

- Water feeding from deep wells
- Sprinkling and flow irrigation systems
- Water treatment plants filtration and reverse osmosis
- Industrial cooling and processing
- Fountains
- Fire-fighting systems

FEATURES

- Easy to install and service, thanks to the simple hydraulic design (all parts are easily dismantled if field service is necessary, thus minimizing the system down-time)
- Fluted Ceramic/Nitrile bearings and floating PTFE neck rings allow excellent abrasives handling and wear resistance
- Check valve assembly incorporated into discharge head

SPECIFICATIONS

- Capacities up to 70 m³/h
- Heads up to 500 m
- Maximum allowable amount of sand 50 gr/m³
- Water temperature range: from 0°C to 50°C
- Rotation: counter clockwise when looking into discharge
- Pump can work continuously both vertically or horizontally
- Coupling with NEMA standard motors

AVAILABLE ON REQUEST

- AISI 316 stainless steel version (DIN/EN 1.4401)
- Double cable guard for starting of star/delta motors
- BHE 14 and 19 types with Rp 2" and 3" discharge head
- 4" motor adapter
- High temperature version (up to 90°C)

CODICE IDENTIFICATIVO PUMP IDENTIFICATION CODE



No. di giranti
No. of impellers

m³/h al massimo rendimento
m³/h at max. efficiency

Indicazione per la versione in AISI 316
Indication for AISI 316 version only

Serie modelli
Models series

Indicazione per l'attacco a motore 4"
Indication for 4" motor only

Dimensione minima dei pozzi: 6"
6" Dimension of deep wells



6 BHE

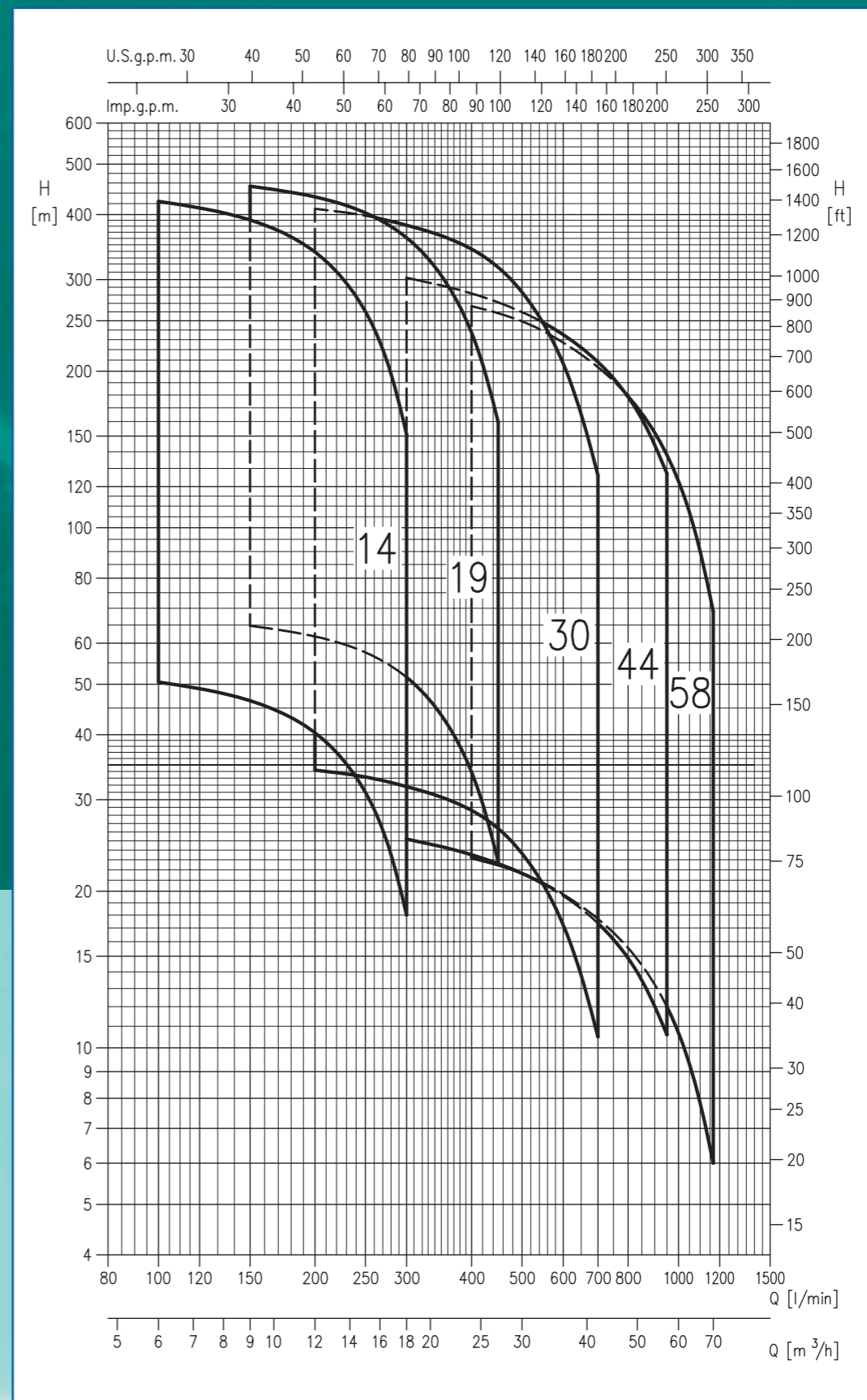
Gamma delle prestazioni
Performance range

6 BHE

DESCRIZIONE PARTI PART DESCRIPTION	TIPO TYPE	MATERIALI MATERIAL			
		Versione Standard Standard version		Versione L L version	
		AISI	DIN/EN	AISI	DIN/EN
Camicia esterna con corpo di mandata <i>Outer case with discharge head</i>	Stainless steel	316	1.4401	316	1.4401
Piatto valvola di non ritorno con: <i>Check valve with</i>	Stainless steel	316	1.4401	316	1.4401
anello di tenuta <i>sealing o-ring</i>	Nitrile rubber (NBR)				
Convogliatore superiore con: <i>Upper bowl with:</i>	Stainless steel	316	1.4401	316	1.4401
bussola superiore <i>upper bearing bush</i>	Nitrile rubber (NBR)				
boccola cuscinetto superiore <i>upper shaft sleeve</i>	Stainless steel w/ ceramic coating	329	1.4460	329	1.4460
Albero <i>Pump shaft</i>	Stainless steel	316	1.4401	316	1.4401
Diffusore con: <i>Diffuser with:</i>	Stainless steel	304	1.4301	316	1.4401
anello di rasamento <i>floating neck ring</i>	Teflon (PTFE)				
bussola intermedia <i>intermediate bearing bush</i>	Nitrile rubber (NBR)				
cuscinetto intermedio <i>intermediate shaft sleeve</i>	Stainless steel	304	1.4301	316	1.4401
Girante <i>Impeller</i>	Stainless steel	304	1.4301	316	1.4401
Copricavo <i>Cable guard</i>	Stainless steel	316	1.4401	316	1.4401
Filtro in aspirazione <i>Suction strainer</i>	Stainless steel	316	1.4401	316	1.4401
Supporto motore <i>Motor bracket</i>	Stainless steel	316	1.4401	316	1.4401
Rondella reggispira <i>Up-thrust washer</i>	Stainless steel	316	1.4401	316	1.4401
Reggispira <i>Up-thrust disc</i>	Teflon (PTFE)				
Viti e rondelle <i>Screw and washer</i>	Stainless steel	316	1.4401	316	1.4401



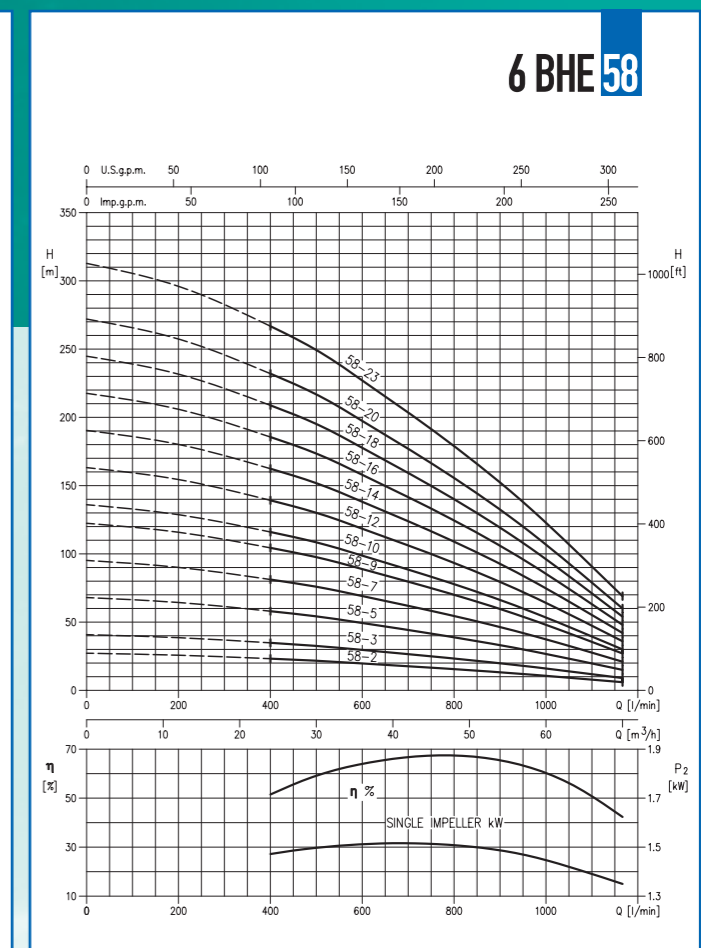
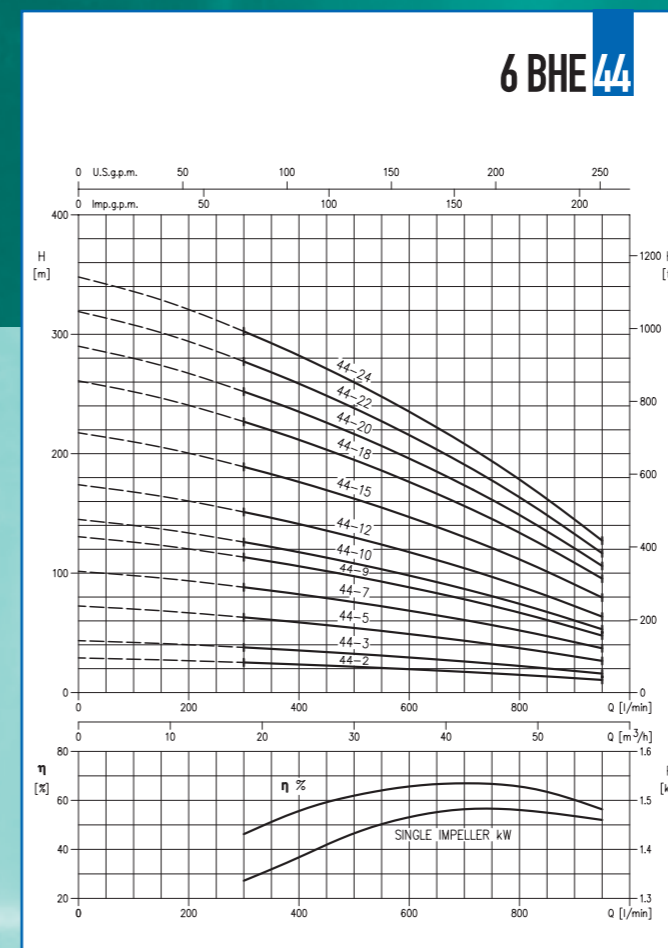
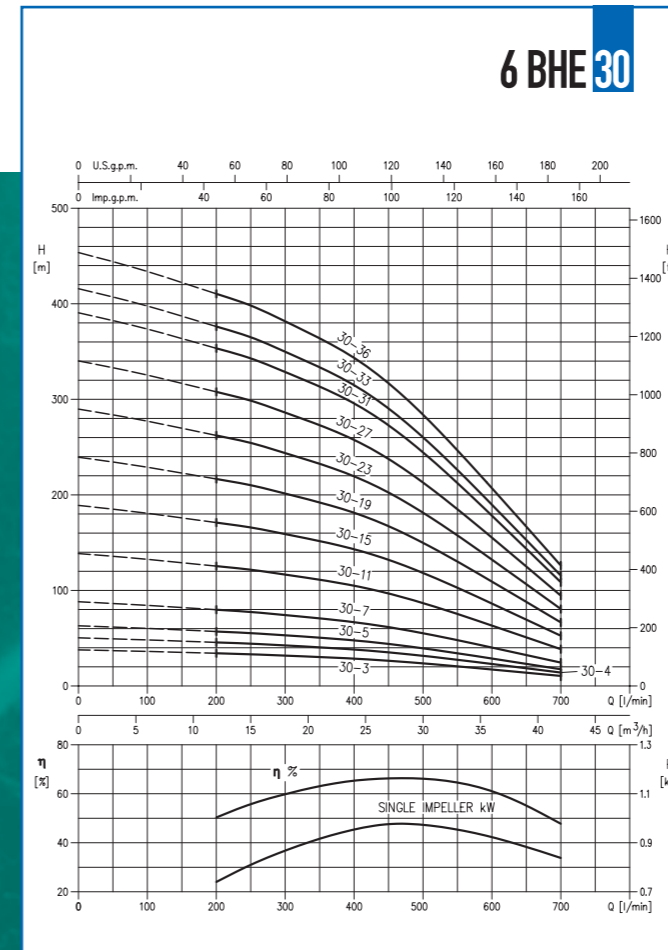
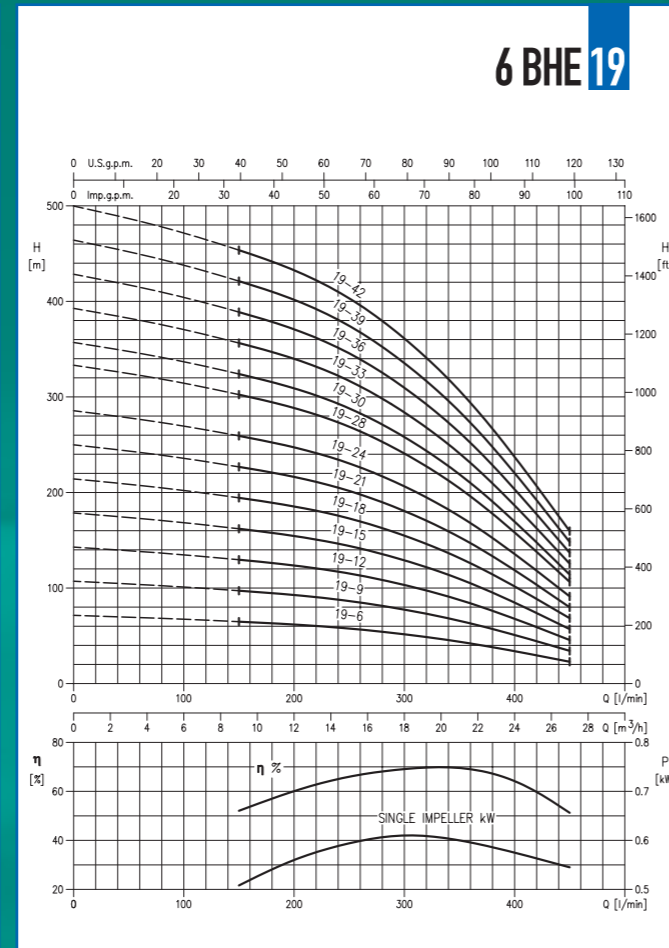
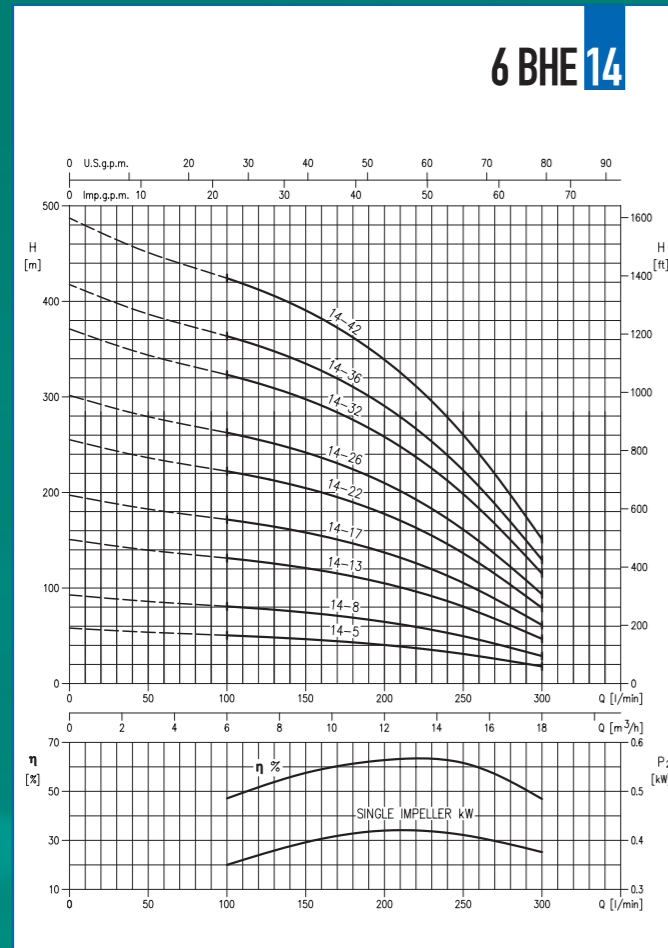
Stadio radiale e semiassiale
Radial and mixed flow stage



Curve di prestazione Performances curves

6 BHE

6 BHE



LEGENDA SIMBOLI:
Q = portata
H = prevalenza
P2 = potenza assorbita pompa
η = rendimento pompa
 Tolleranza delle curve secondo ISO 9906 Allegato A

SYMBOLS EXPLANATION:
Q = volume flow rate
H = total head
P2 = pump input power (shaft power)
η = pump efficiency
 Tolerances according to ISO 9906 Annex A



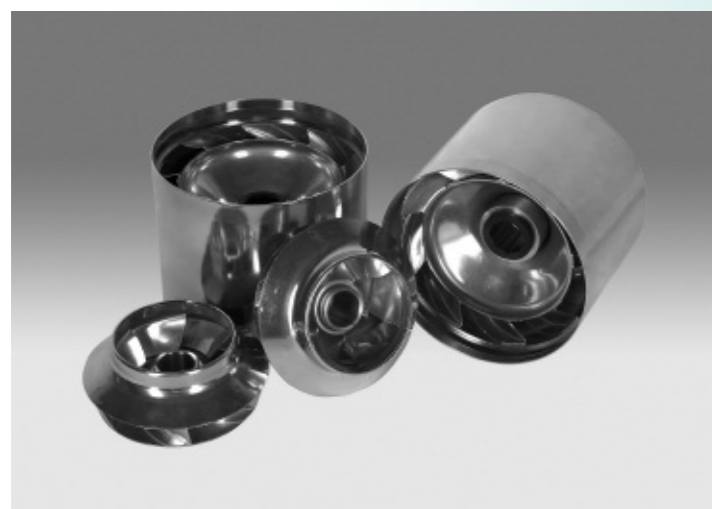
8 BHE

Gamma delle prestazioni
Performance range

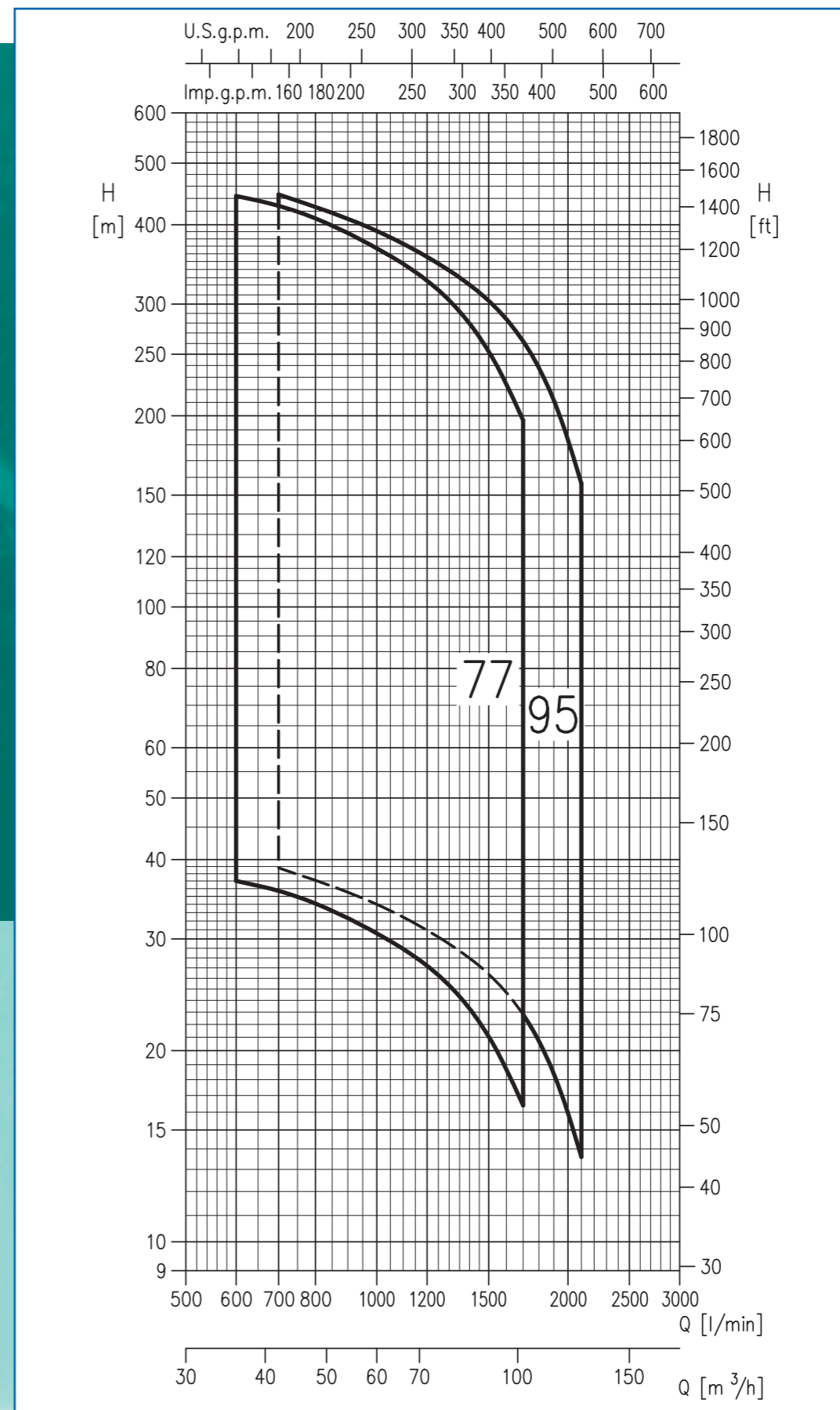
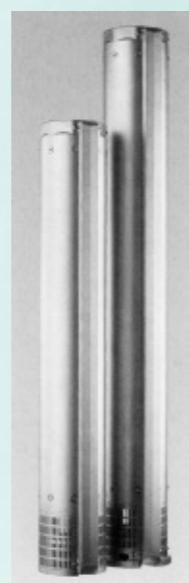
8 BHE

DESCRIZIONE PARTI PART DESCRIPTION	TIPO TYPE	MATERIALI MATERIAL	
		AISI	Versione Standard Standard version DIN/EN
Camicia esterna Outer case	Stainless steel	316	1.4401
Supporto motore e Flangia Motor Adapter and Flange	Stainless steel	316	1.4401
filtro in aspirazione suction strainer	Stainless steel	316	1.4401
raccordo di mandata discharge head	Stainless steel	316	1.4401
Assieme valvola di non ritorno Check valve assembly	Stainless steel	316	1.4401
OR di tenuta sealing O-ring	Nitrile rubber (NBR)		
spallamento stop ring	Stainless steel	316	1.4401
molla spring	Stainless steel	316	1.4401
Albero Pump shaft	Stainless steel	329	1.4460
cuscinetto superiore (1) upper journal sleeve (1)	Silicon carbide (SiC)		
Giunto di accoppiamento Coupling to motor	Stainless steel	316/329	1.4401/1.4460
Diffusore con: Diffuser with:	Stainless steel	316	1.4401
anello di rasamento floating neck ring	Teflon (PTFE)		
bussola intermedia intermediate bearing bush	Nitrile rubber (NBR)		
flangia di fissaggio flange clamping neck ring	Stainless steel	316	1.4401
Girante Impeller	Stainless steel	316	1.4401
anello conico split cone	Stainless steel	316	1.4401
anello conico di fissaggio split cone nut	Stainless steel	316	1.4401
Copricavo Cable guard	Stainless steel	316	1.4401
Bloccaggio supporto Insert locking outer case	Stainless steel	316	1.4401
Rondella reggispira Up-thrust washer	Stainless steel	329	1.4460
Reggispira Up-thrust disc	Teflon (PTFE)		
Viti e rondelle Screw and washer	Stainless steel	316	1.4401

(1) solo per i modelli con più di 16 stadi • only for types with more than 16 stages



Stadio semiassiale
Mixed flow stage



Curve di prestazione Performances curves

8 BHE

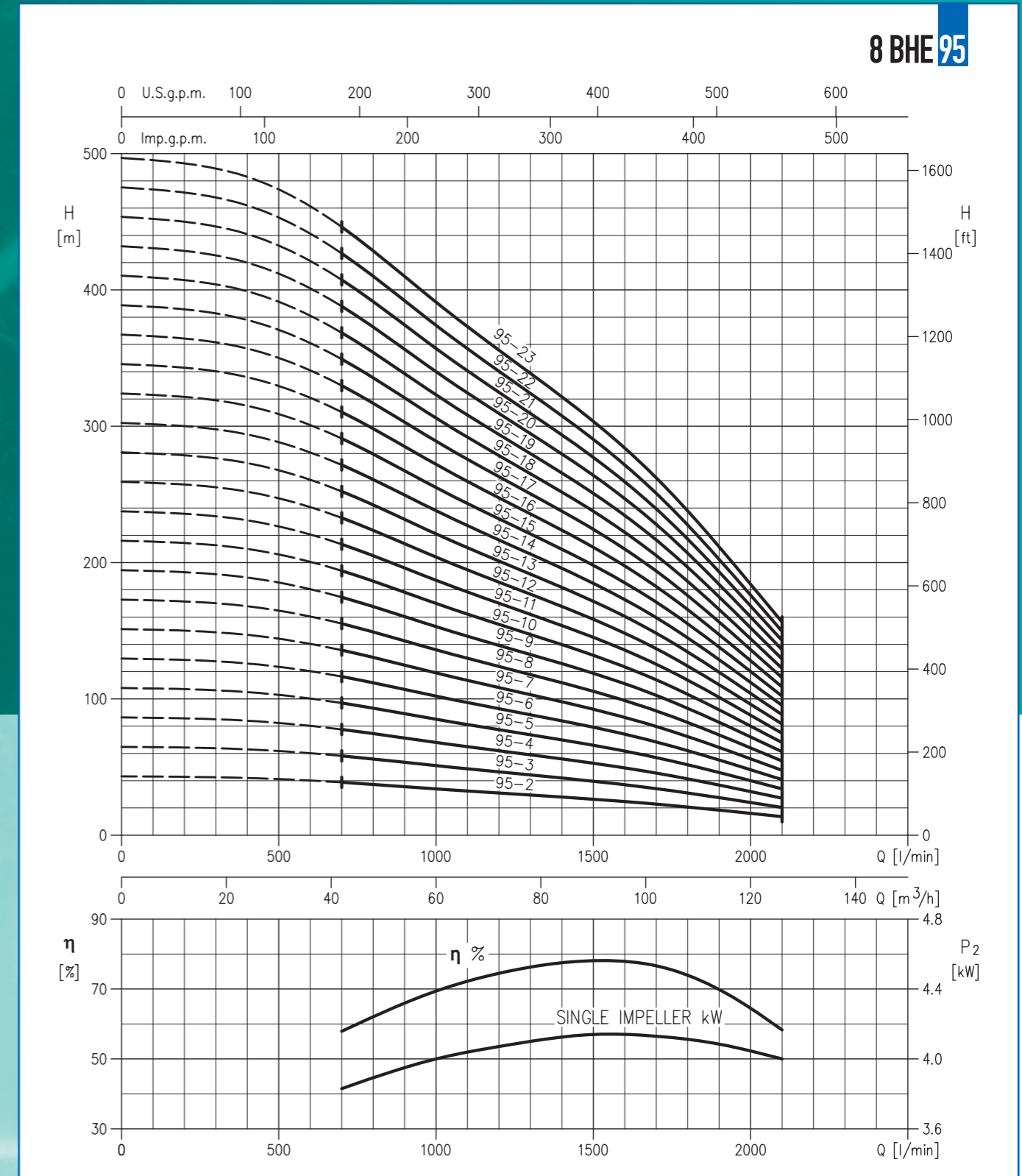
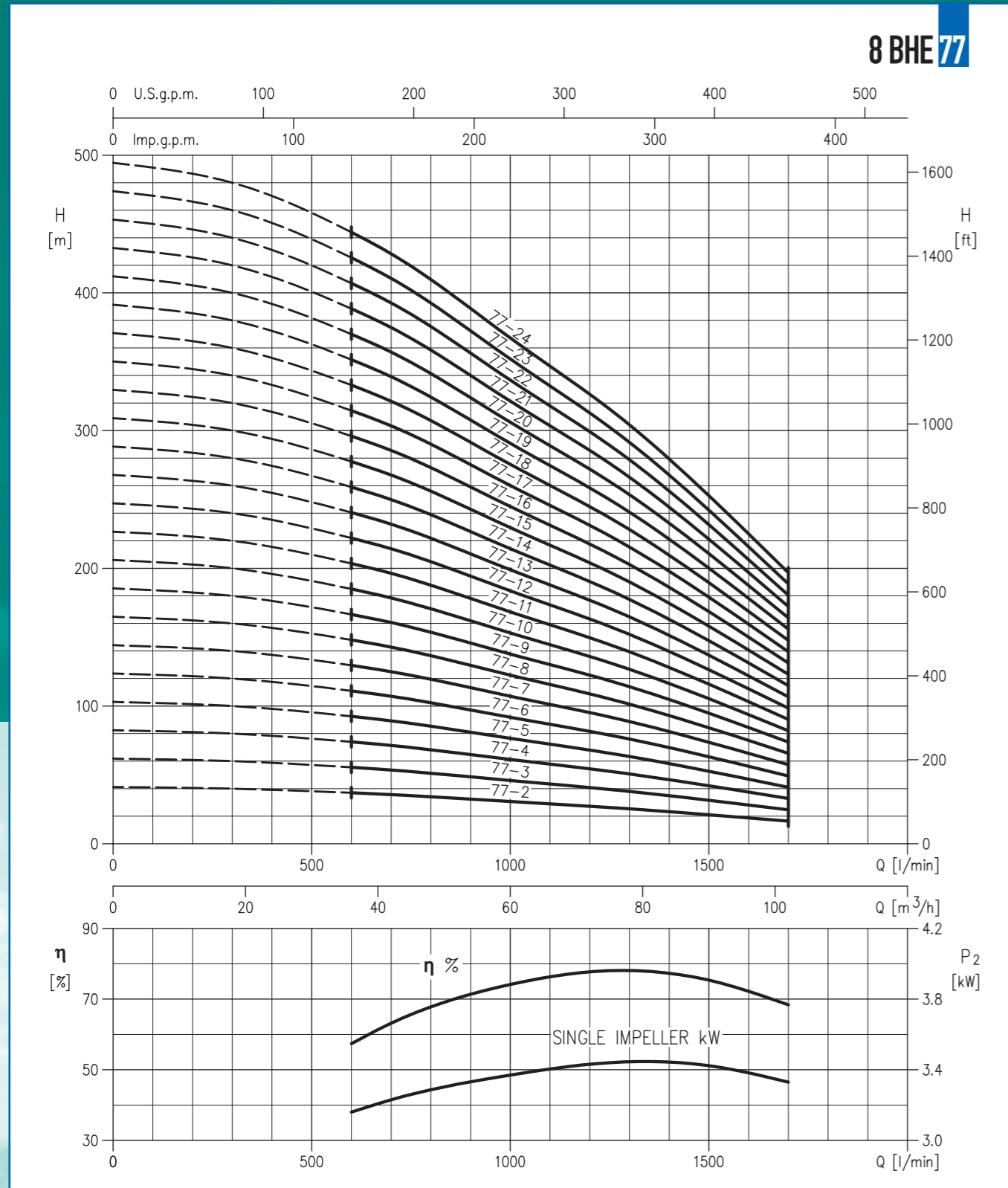
LEGENDA SIMBOLI:

- Q = portata
- H = prevalenza
- P2 = potenza assorbita pompa
- η = rendimento pompa
- Tolleranza delle curve secondo ISO 9906 Allegato A

SYMBOLS EXPLANATION:

- Q = volume flow rate
- H = total head
- P2 = pump input power (shaft power)
- η = pump efficiency
- Tolerances according to ISO 9906 Annex A

8 BHE



Tablelle Prestazioni a ~ 2900 rpm Performances tables at ~ 2900 rpm

8 BHE



EBARA

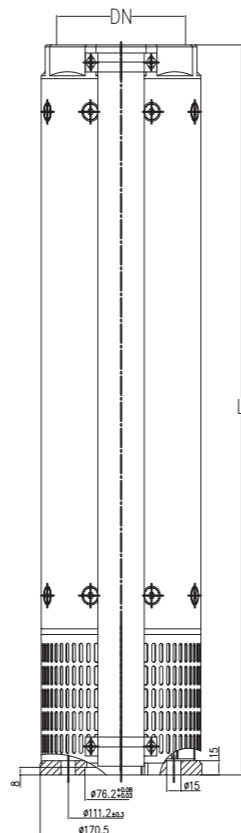
Let Our Excellence Be Yours



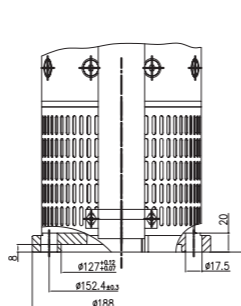
Modello pompa Pump type	Grandezza Size	Motore Motor Potenza - Power kW HP		Dimensioni Dimensions L (mm) DN		Peso Weight KG
86 BHE 77 - 2	6"	7,5	10	644	Rp 5"	31,5
86 BHE 77 - 3	6"	11	15	770	Rp 5"	36,5
86 BHE 77 - 4	6"	15	20	896	Rp 5"	41,5
86 BHE 77 - 5	6"	18,5	25	1022	Rp 5"	46,5
86 BHE 77 - 6	6"	22	30	1148	Rp 5"	51,0
86 BHE 77 - 7	6"	30	40	1274	Rp 5"	56,0
86 BHE 77 - 8	6"	30	40	1400	Rp 5"	61,0
86 BHE 77 - 9	6"	30	40	1526	Rp 5"	66,0
86 BHE 77 - 10	6"	37	50	1652	Rp 5"	71,0
86 BHE 77 - 11	6"	37	50	1778	Rp 5"	76,0
8 BHE 77 - 12	8"	45	60	1909	Rp 5"	82,0
8 BHE 77 - 13	8"	55	75	2035	Rp 5"	87,0
8 BHE 77 - 14	8"	55	75	2161	Rp 5"	92,0
8 BHE 77 - 15	8"	55	75	2287	Rp 5"	97,0
8 BHE 77 - 16	8"	75	100	2413	Rp 5"	101,5
8 BHE 77 - 17	8"	75	100	2539	Rp 5"	106,5
8 BHE 77 - 18	8"	75	100	2665	Rp 5"	111,5
8 BHE 77 - 19	8"	75	100	2791	Rp 5"	116,5
8 BHE 77 - 20	8"	75	100	2917	Rp 5"	121,0
8 BHE 77 - 21	8"	75	100	3043	Rp 5"	126,0
8 BHE 77 - 22	8"	93	125	3169	Rp 5"	131,0
8 BHE 77 - 23	8"	93	125	3295	Rp 5"	136,0
8 BHE 77 - 24	8"	93	125	3421	Rp 5"	141,0
86 BHE 95 - 2	6"	9,2	12,5	644	Rp 5"	31,5
86 BHE 95 - 3	6"	15	20	770	Rp 5"	36,5
86 BHE 95 - 4	6"	18,5	25	896	Rp 5"	41,5
86 BHE 95 - 5	6"	22	30	1022	Rp 5"	46,0
86 BHE 95 - 6	6"	30	40	1148	Rp 5"	51,0
86 BHE 95 - 7	6"	30	40	1274	Rp 5"	56,0
86 BHE 95 - 8	6"	37	50	1400	Rp 5"	61,0
86 BHE 95 - 9	6"	37	50	1526	Rp 5"	66,0
8 BHE 95 - 10	8"	45	60	1657	Rp 5"	72,0
8 BHE 95 - 11	8"	55	75	1783	Rp 5"	77,0
8 BHE 95 - 12	8"	55	75	1909	Rp 5"	82,0
8 BHE 95 - 13	8"	55	75	2035	Rp 5"	87,0
8 BHE 95 - 14	8"	75	100	2161	Rp 5"	92,0
8 BHE 95 - 15	8"	75	100	2287	Rp 5"	97,0
8 BHE 95 - 16	8"	75	100	2413	Rp 5"	102,0
8 BHE 95 - 17	8"	75	100	2539	Rp 5"	106,5
8 BHE 95 - 18	8"	93	125	2665	Rp 5"	111,5
8 BHE 95 - 19	8"	93	125	2791	Rp 5"	116,5
8 BHE 95 - 20	8"	93	125	2917	Rp 5"	121,0
8 BHE 95 - 21	8"	93	125	3043	Rp 5"	126,0
8 BHE 95 - 22	8"	110	150	3169	Rp 5"	131,0
8 BHE 95 - 23	8"	110	150	3295	Rp 5"	136,0

Dimensioni Dimensions

Adattatore per 6" 6" Motor adapter



Adattatore per 8" 8" Motor adapter



	Diametro con 1 copricavo Diameter with 1 cable cover	Diametro con 2 copricavo Diameter with 2 cable cover	Diametro esterno motore External motor diameter
Pompa 8" Pump 8"	186,5	192	-
Pompa 8" con motore 6" Pump 8" with motor 6"	186,5	192	136,5
Pompa 8" con motore 8" Pump 8" with motor 8"	195	197,5	187,5